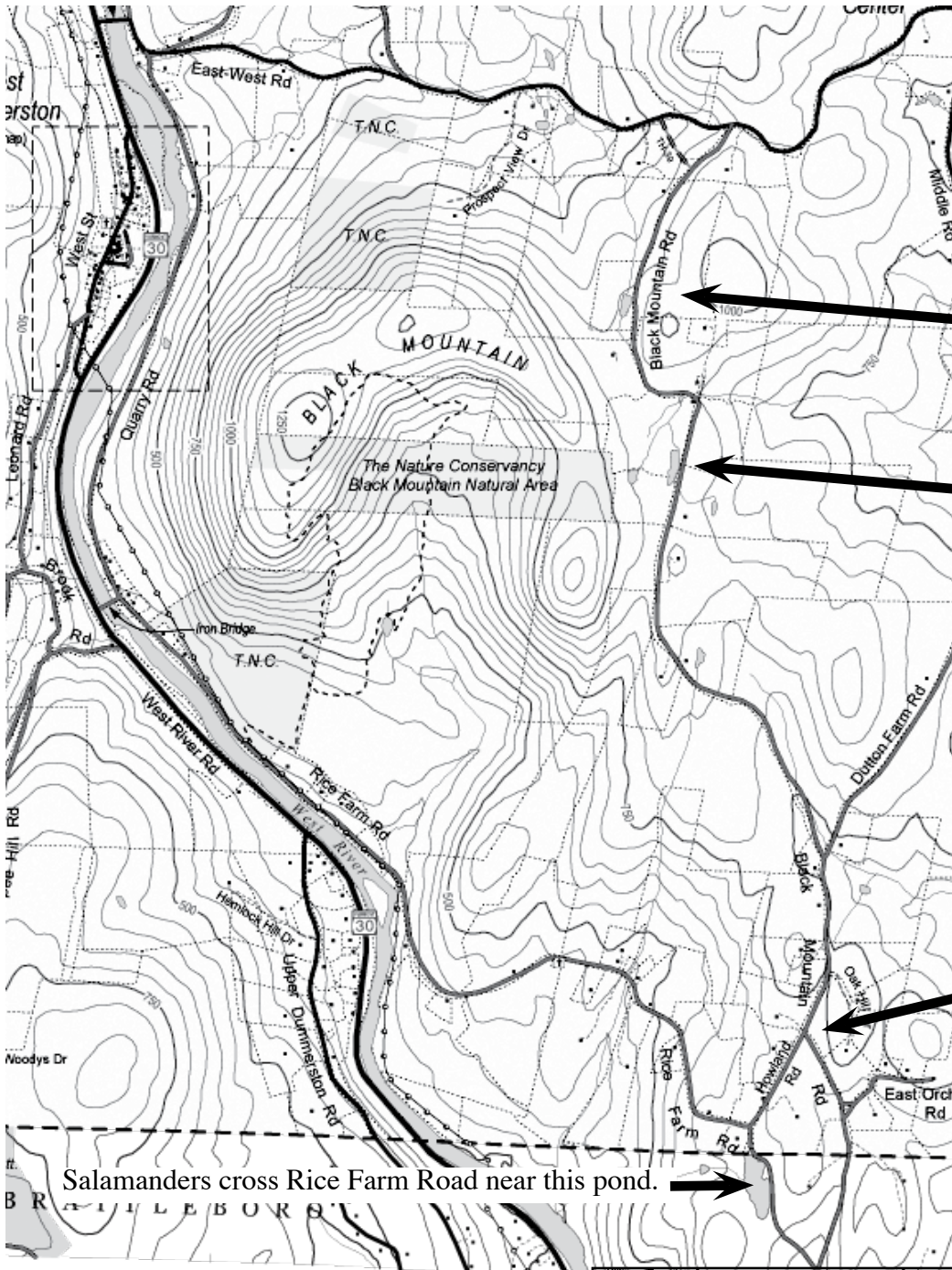


Black Mountain Road Sites



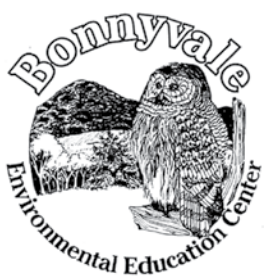
There are a number of sites along Black Mountain Road where salamanders cross. Since these are new sites, we don't yet know where help is needed the most.

Some cross near Mountain Mowings Farm

These pools are a likely crossing site.

Salamanders cross into wetlands near the Howland Road intersection

Salamanders cross Rice Farm Road near this pond.



The sharp corner before Fox Farm Road is another active site.

