



# Amphibian ID

Learn the Big Four  
and the other rainy night revelers



Spotted Salamander



Jefferson Salamander

## The Big 4 Amphibians

Spring Peeper



Wood Frog



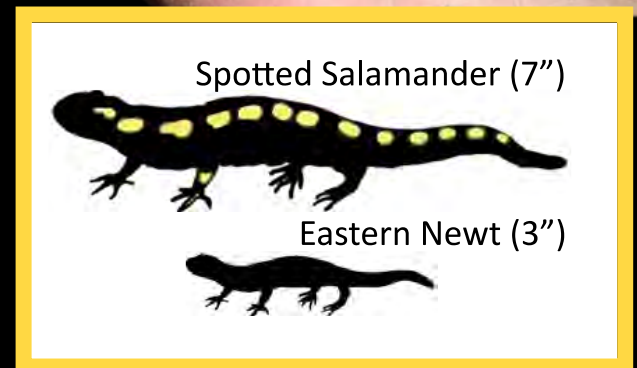
# Spotted Salamander

**Crossing note:** There's no mistaking these salamanders, unless you find one of the unusual one with no spots. If in doubt, send a picture.



## Field Markings:

- Grey to black in color
- 6 – 9 inches long
- Two irregular rows of yellow spots
- Broad, rounded snout



# Jefferson Salamander & Jefferson Complex Hybrids

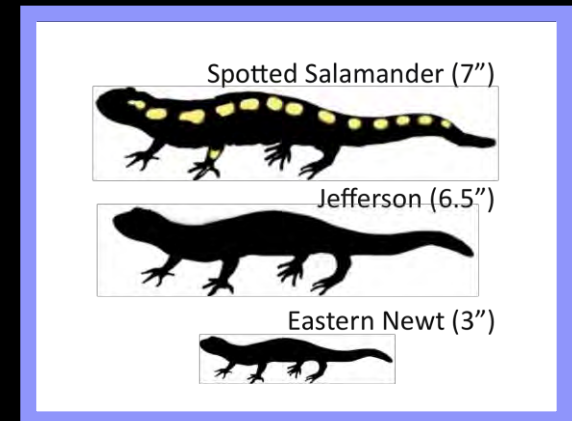
Crossing note: Jeffersons migrate early. They are most likely to be found in Brattleboro, Dummerston and Putney. These salamanders are rare in Vermont, though they may be locally common.

Leo Kinney



## Field Markings:

- Brown to grey in color
- Tiny white or pale blue flecks on the belly and lower sides
- Up to 7 inches long
- Long toes (males toes longer than females)
- Head widest behind the eyes
- Tail laterally compressed



# Wood Frog:

Crossing note: Often the first amphibians to begin migrating, they will be the most abundant amphibians at some crossing sites, especially early in the season.

## Field Markings:

- Brown to light reddish-brown
- Dark mask
- Dorsolateral ridges
- 1 – 2.5 inches long



Dave Huth

# Spring Peeper:

**Crossing note:** These tiny frogs are commonly seen at road crossing sites, and are among the hardest amphibians to spot!

## Field Markings:

- Light brown
- No dorsolateral ridges
- 1 – 1½ inches long
- “X” marking on back
- Small adhesive discs on toes



Brian Gratwicke

# Other Amphibians You Might See

# Eastern Newt

**Crossing note:** Sometimes found in roads later in the crossing season. They are more likely to be wandering than migrating.



Patrick Coin

## Field Markings:

- The newt has two distinct life stages: the eft stage and the adult stage.
  - Efts are bright orange to yellow-green, and have dry granular skin.
  - Adults are olive green, smooth skinned and aquatic.
- 1.5 – 4 inches long
- Rows of red spots, outlined in black, down each side of their back



# Eastern Red-backed Salamander

**Crossing note:** These salamanders are sometimes found in roads on crossing nights. Some move from upland wintering habitat to wetter habitats in spring. Red-backs are known to migrate in this way at one known crossing site.



Jason Weckstein

## Field markings:

- Red-brown back with darker sides
- 2.5 - 5 inches long
- Small legs
- Belly: salt and pepper speckled (looks like granite)

Spotted Salamander (7")



Eastern Newt (3")



Red-Backed (3")

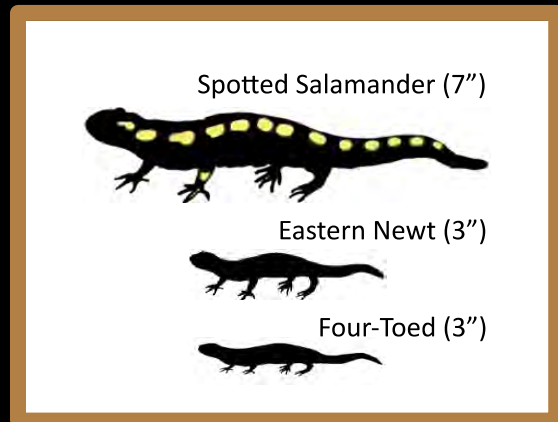


# Four-toed Salamander

**Crossing note:** This rare salamander migrate to wetlands in the spring. Please photograph any suspected four-toeds!

## Field Markings:

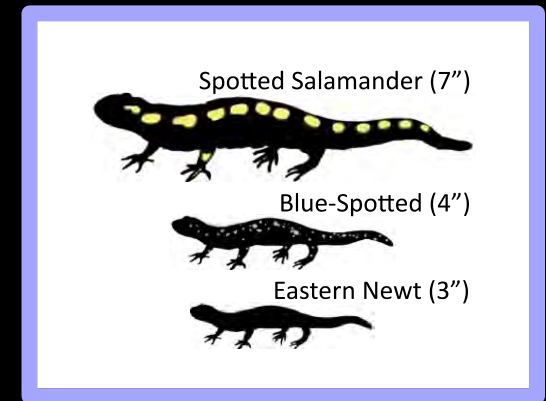
- Black flecks on a red-brown back
- Grayish-brown upper sides
- Bright white belly with black scattered spots
- Up to 4 inches long



Andrew Hoffman

# Blue Spotted Salamander:

**Crossing Note:** In Windham County, blue spotted salamanders are very rare. Because they hybridized with Jefferson salamanders, you are much more likely to find a hybrid that has more blue spotted than Jefferson genes. If you see a salamander with the following field marks, please get a good photo!



## Field markings

- Black with blue, or pale blue spots or flecks
- Up to 5 inches long
- Spots cover entire body, including head, tail and legs

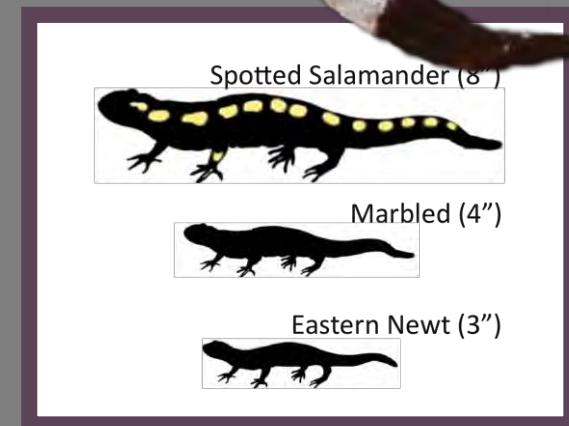
# Marbled Salamander:

Crossing note: has not been found in Vermont, but is found in neighboring states. If you see one, take a picture!



## Field Markings:

- Black/dark brown body with light white/silvery cross bands
- Stout-bodied and chubby in appearance
- Thick tail
- 3.5-4.25 inches long

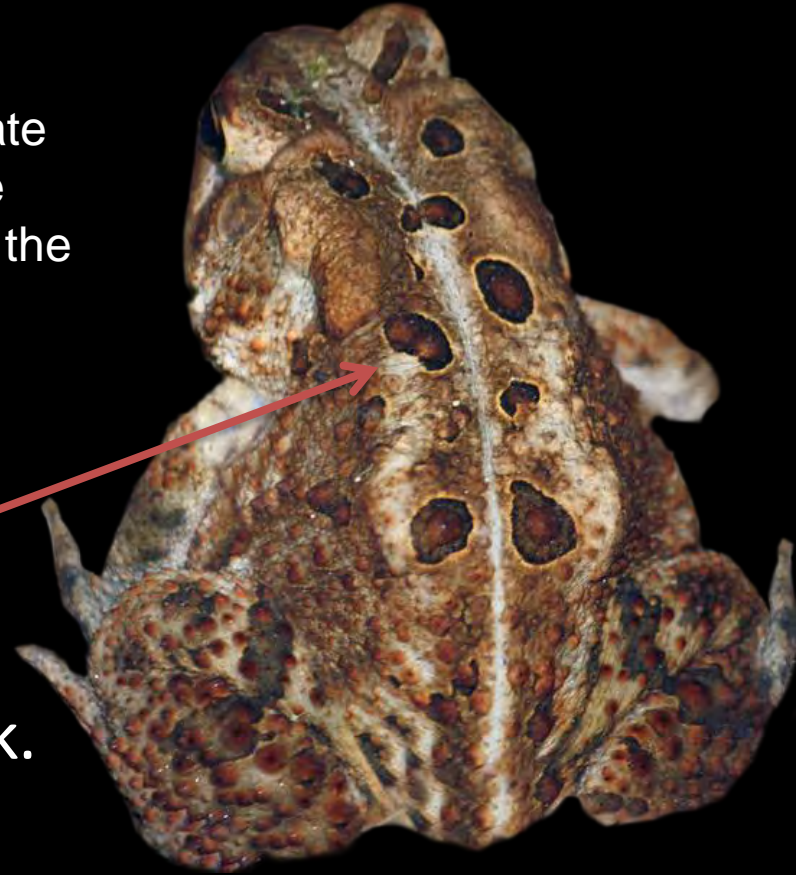


# American Toad:

**Crossing note:** This common amphibian may appear at crossing sites on warm nights and late in the crossing season (late April). They will be found in roads on warm wet nights throughout the summer.

## Field Markings:

- Dry, bumpy skin
- One or two large warts (along with any smaller warts) in each black spot found along the back.
- Parotid glands behind eye
- Short hind legs (compared to frogs)
- White belly with black flecks
- 2 – 3 ½ inches long



Jay Cantroot



Dave Huth

# Green Frog:

**Crossing note:** These common frogs do not breed until later in the summer, but can sometimes be found at crossing sites on warm nights.



## Field Markings:

- Bright to olive green
- Dorsolateral ridges
- 2 ½ - 3 ½ inches long
- White belly
- Green upper lip

A Hoffman

# American Bullfrog

**Crossing note:** These common frogs do not breed until later in the summer, but can sometimes be found at crossing sites on warm nights. Young Bullfrogs wander widely and may be mistaken for Green Frogs. Check field markings!



Ken Schneider

## Field Markings:

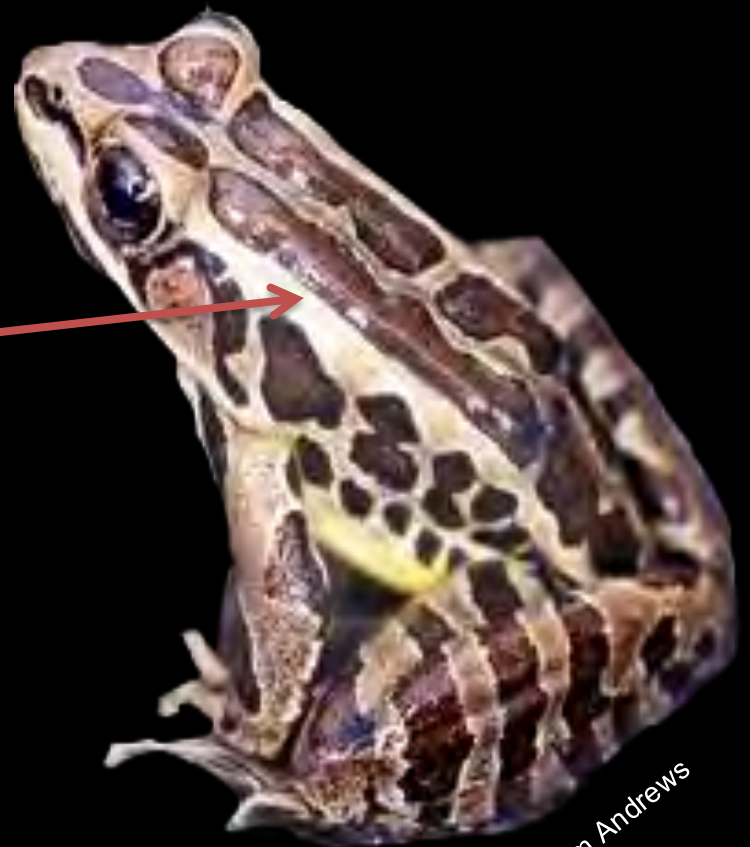
- Mottled green and brown
- Green upper lip
- No dorsolateral ridge
- Big. Up to 7 inches long!
- Ridge from eye around eardrum, like earpiece on glasses.

# Pickerel Frog

**Crossing note:** These frogs are seldom seen on crossing nights, but may be found in roads on warm, rainy nights throughout the summer.

## Field Markings:

- Rectangular spots outlined in black
- Dorsolateral ridges
- 1 ½ - 3 inches long
- White belly
- Yellow “waistcoat” and yellow down the inside of the legs



Jim Andrews